

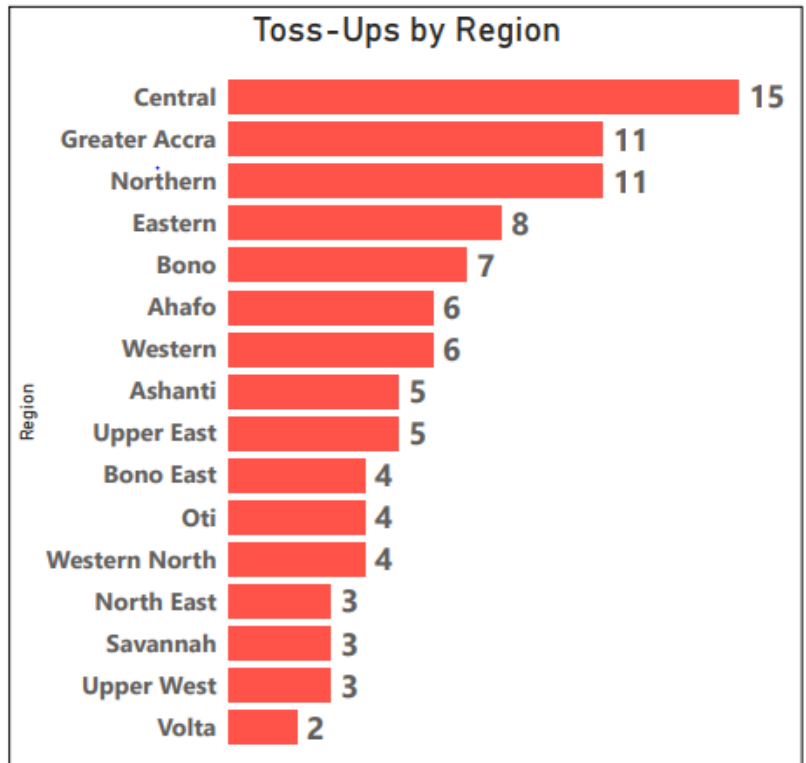
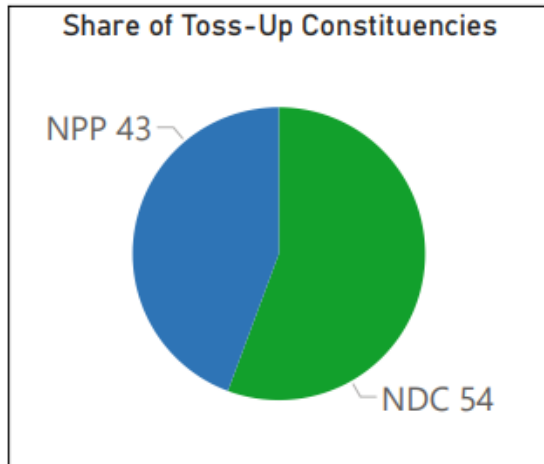
We project the winners and losers of the 2024 parliamentary elections in all 275 constituencies (excluding SALL). Our forecast is based on the EN Analytics Forecast Model developed for the 2024 election cycle with a 95% degree of confidence. We pride ourselves to have accurately projected 94.4% of the constituencies in the 2020 election cycle.

2024 parliamentary forecast summary:

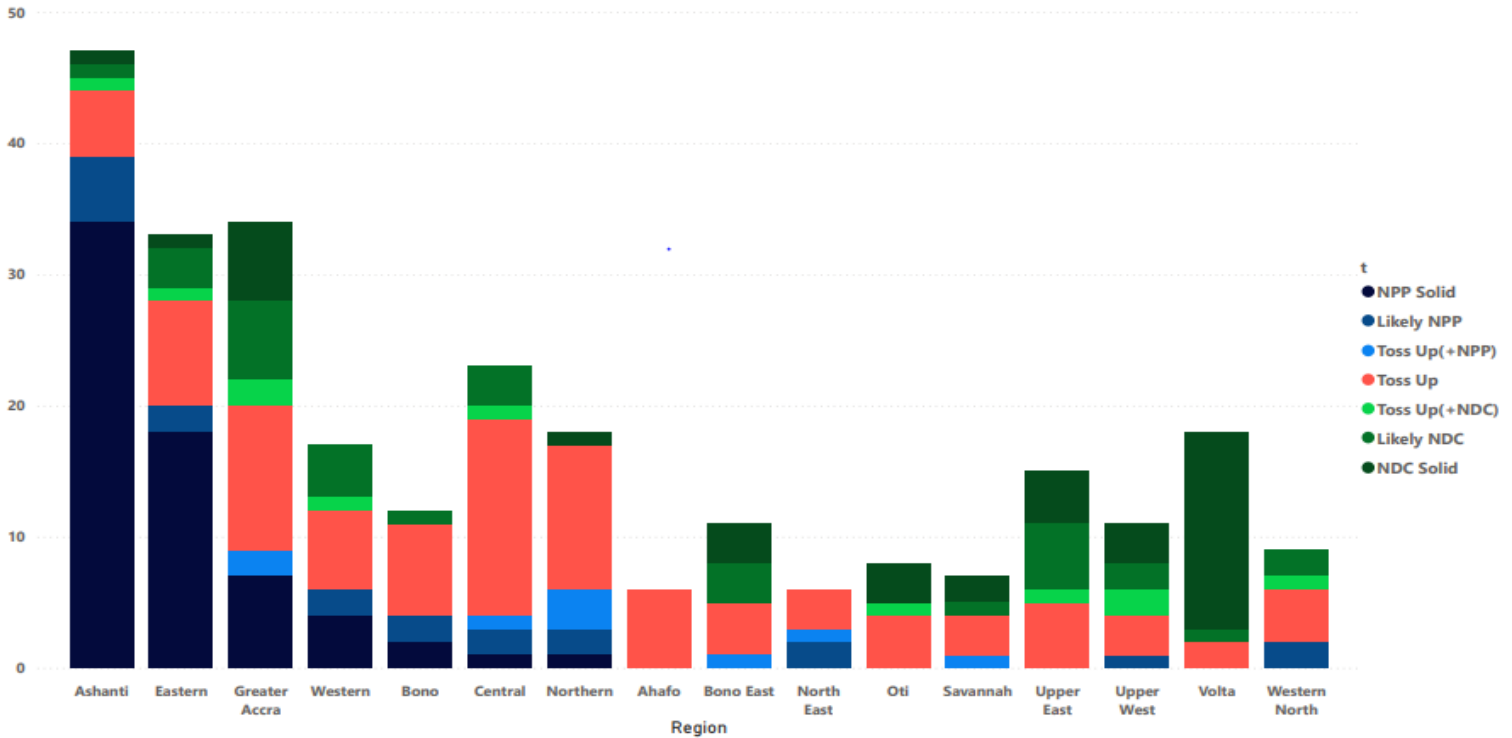
NPP Solid	Likely NPP	Toss Up (+NPP)	Toss Up	Toss Up (+NDC)	Likely NDC	NDC Solid
67	20	9	97	11	32	39

Going into the 2024 elections, the NPP has 96 seats which are considered safe. The NDC has 82 seats which are considered safe. The remaining 97 parliamentary seats as toss ups to be contested for. Of the 97 toss-up constituencies, the NPP is the incumbent party in 43 constituencies while the NDC is the incumbent in the remaining 54 constituencies.

ANALYSIS OF PROJECTED TOSS-UPS IN THE 2024 PARLIAMENTARY ELECTIONS



Regional Distribution of Projection based on Number of Constituencies



8 key facts about the 2024 Parliamentary Forecast

- All 6 constituencies in Ahafo region are toss ups and up for grabs.
- The Atwima Mponua parliamentary seat, which is currently occupied by Honorable Isaac Kwadwo Asiamah and which used to be a very safe seat for the NPP, is a toss-up heading into the 2024 elections and the NPP could lose that seat for the first time in its history.
- Another surprising toss up is Abuakwa North, which was once considered a stronghold of the NPP.
- Ododiodioo has historically trended towards the NDC but it is a toss up in the 2024 elections. It is currently occupied by honorable Nii Lante Vanderpuye of the NDC.
- Dome Kwabenya has moved from NPP Solid to Toss Up(+NPP). The NPP will win the seat but very marginally.
- The Assin Central seat, currently occupied by Honorable Kennedy Ohene Agyapong, is a toss-up.
- Whiles Central and Greater Accra regions have widely been acclaimed as the swing regions, the Northern, North East and Savannah(formerly Northern Region as a collective) have assumed the status of swing regions. The NDC has lost its competitive edge in those regions and most of the

constituencies are now toss ups. These three regions could decide the balance of power in the 2024 elections.

- We expect the performance of NPP parliamentary candidates to depress by about 2% on average across the country based on our Economic Wellbeing Index (EWI). See details of this index under methodology.

Our detailed forecast for each constituency is as follows:

Ahafo Region

#	Constituency	Incumbent Party	Projection
1	Asunafo North	NPP	Toss Up
2	Asunafo South	NDC	Toss Up
3	Asutifi North	NPP	Toss Up
4	Asutifi South	NDC	Toss Up
5	Tano North	NPP	Toss Up
6	Tano South	NPP	Toss Up

Ashanti Region

#	Constituency	Incumbent Party	Projection
1	Adansi Asokwa	NPP	Likely NPP
2	Afigya Kwabre North	NPP	NPP Solid
3	Afigya Kwabre South	NPP	NPP Solid
4	Afigya Sekyere East	NPP	NPP Solid
5	Ahafo Ano North	NPP	Toss Up
6	Ahafo Ano South East	NPP	Likely NPP
7	Ahafo Ano South West	NPP	Toss Up
8	Akrofuom	NPP	NPP Solid
9	Asante Akim Central	NPP	Likely NPP
10	Asante Akim North	NPP	NPP Solid
11	Asante Akim South	NPP	NPP Solid
12	Asawase	NDC	NDC Solid
13	Asokwa	NPP	NPP Solid
14	Atwima Kwanwoma	NPP	NPP Solid
15	Atwima Mponua	NPP	Toss Up
16	Atwima Nwabiagya North	NPP	NPP Solid
17	Atwima Nwabiagya South	NPP	NPP Solid
18	Bantama	NPP	NPP Solid

19	Bekwai	NPP	NPP Solid
20	Bosome-Freho	NPP	NPP Solid
21	Bosomtwe	NPP	NPP Solid
22	Effiduase/Asokore	NPP	NPP Solid
23	Ejisu	NPP	NPP Solid
24	Ejura Sekyedumase	NDC	Likely NDC
25	Fomena	NPP	Likely NPP
26	Juaben	NPP	NPP Solid
27	Kumawu	NPP	NPP Solid
28	Kwabre East	NPP	NPP Solid
29	Kwadaso	NPP	NPP Solid
30	Mampong	NPP	NPP Solid
31	Manhyia North	NPP	NPP Solid
32	Manhyia South	NPP	NPP Solid
33	Manso Adubia	NPP	Likely NPP
34	Manso Nkwanta	NPP	NPP Solid
35	New Edubiase	NDC	Toss Up(+NDC)
36	Nhyiaeso	NPP	NPP Solid
37	Nsuta Kwamang	NPP	NPP Solid
38	Obuasi East	NPP	NPP Solid
39	Obuasi West	NPP	NPP Solid
40	Odotobri	NPP	NPP Solid
41	Offinso North	NPP	Toss Up
42	Offinso South	NPP	NPP Solid
43	Oforikrom	NPP	NPP Solid
44	Old Tafo	NPP	NPP Solid
45	Sekyere Afram Plains	NDC	Toss Up
46	Suame	NPP	NPP Solid
47	Subin	NPP	NPP Solid

Bono Region

#	Constituency	Incumbent Party	Projection
1	Banda	NDC	Toss Up
2	Berekum East	NPP	NPP Solid
3	Berekum West	NPP	Toss Up
4	Dormaa Central	NPP	Likely NPP
5	Dormaa East	NPP	Likely NPP
6	Dormaa West	NPP	Toss Up
7	Jaman North	NDC	Likely NDC
8	Jaman South	NDC	Toss Up

9	Sunyani East	NPP	NPP Solid
10	Sunyani West	NPP	Toss Up
11	Tain	NDC	Toss Up
12	Wenchi	NDC	Toss Up

Bono East Region

#	Constituency	Incumbent Party	Projection
1	Atebubu/Amanting	NDC	Likely NDC
2	Kintampo North	NDC	NDC Solid
3	Kintampo South	NPP	Toss Up
4	Nkoranza North	NDC	Likely NDC
5	Nkoranza South	NDC	Likely NDC
6	Pru East	NDC	NDC Solid
7	Pru West	NPP	Toss Up(+NPP)
8	Sene East	NDC	NDC Solid
9	Sene West	NDC	Toss Up
10	Techiman North	NDC	Toss Up
11	Techiman South	NPP	Toss Up

Central Region

#	Constituency	Incumbent Party	Projection
1	Abura / Asebu / Kwamankese	NPP	Toss Up
2	Agona East	NDC	Toss Up
3	Agona West	NPP	Toss Up
4	Ajumako / Enyan / Essiam	NDC	Likely NDC
5	Asikuma Odoben Brakwa	NDC	Toss Up
6	Assin Central	NPP	Toss Up
7	Assin North	NDC	Likely NDC
8	Assin South	NPP	Likely NPP
9	Awutu Senya East	NPP	Toss Up
10	Awutu Senya West	NDC	Toss Up
11	Cape Coast North	NDC	Toss Up
12	Cape Coast South	NDC	Toss Up
13	Effutu	NPP	NPP Solid
14	Ekumfi	NDC	Likely NDC
15	Gomoa Central	NPP	Likely NPP
16	Gomoa East	NDC	Toss Up

17	Gomoa West	NDC	Toss Up(+NDC)
18	Hemang Lower Denkyira	NPP	Toss Up
19	Komenda / Edina Eguafo / Abirem	NDC	Toss Up
20	Mfantseman	NPP	Toss Up
21	Twifo-Atti Morkwaa	NDC	Toss Up
22	Upper Denkyira East	NPP	Toss Up(+NPP)
23	Upper Denkyira West	NDC	Toss Up

Eastern Region

#	Constituency	Incumbent Party	Projection
1	Abetifi	NPP	NPP Solid
2	Abirem	NPP	Toss Up
3	Abuakwa North	NPP	Toss Up
4	Abuakwa South	NPP	NPP Solid
5	Achiase	NPP	Likely NPP
6	Afram Plains North	NDC	Likely NDC
7	Afram Plains South	NDC	NDC Solid
8	Akim Oda	NPP	NPP Solid
9	Akim Swedru	NPP	NPP Solid
10	Akuapim North(Akropong)	NPP	NPP Solid
11	Akuapim South	NPP	NPP Solid
12	Akwatia	NDC	Toss Up
13	Asene Akroso Monso	NPP	NPP Solid
14	Asuogyaman	NDC	Toss Up
15	Atiwa East	NPP	NPP Solid
16	Atiwa West	NPP	NPP Solid
17	Ayensuano	NDC	Toss Up
18	Fanteakwa North	NPP	Toss Up
19	Fanteakwa South	NPP	NPP Solid
20	Kade	NPP	NPP Solid
21	Lower Manya Krobo	NDC	Likely NDC
22	Lower West Akim	NPP	NPP Solid
23	Mpraeso	NPP	NPP Solid
24	New Juaben North	NPP	NPP Solid
25	New Juaben South	NPP	NPP Solid
26	Nkawkaw	NPP	NPP Solid
27	Nsawam Adoagyiri	NPP	Toss Up
28	Ofoase/Ayirebi	NPP	NPP Solid
29	Okere	NPP	NPP Solid
30	Suhum	NPP	Likely NPP

31	Upper Manya Krobo	NDC	Likely NDC
32	Upper West Akim	NPP	Toss Up
33	Yilo Krobo	NDC	Toss Up(+NDC)

Greater Accra Region

#	Constituency	Incumbent Party	Projection
1	Ablekuma Central	NDC	Toss Up
2	Ablekuma North	NPP	NPP Solid
3	Ablekuma South	NDC	Likely NDC
4	Ablekuma West	NPP	Toss Up
5	Ada	NDC	NDC Solid
6	Adenta	NDC	Likely NDC
7	Amasaman	NPP	Toss Up
8	Anyaa Sowutuom	NPP	NPP Solid
9	Ashaiman	NDC	NDC Solid
10	Ayawaso Central	NPP	Toss Up(+NPP)
11	Ayawaso East	NDC	NDC Solid
12	Ayawaso North	NDC	NDC Solid
13	Ayawaso West Wuogon	NPP	Toss Up
14	Bortianor Ngleshie Amanfrom	NPP	Toss Up
15	Dade Kotopon	NDC	Toss Up(+NDC)
16	Dome/Kwabanya	NPP	Toss Up(+NPP)
17	Domeabra/Obom	NDC	Toss Up
18	Klottey Korle	NDC	Likely NDC
19	Kpone Katamanso	NDC	Likely NDC
20	Krowor	NDC	Likely NDC
21	Ledzokuku	NDC	Toss Up
22	Madina	NDC	Likely NDC
23	Ningo/Prampram	NDC	NDC Solid
24	Odododiodio	NDC	Toss Up
25	Okaikwei Central	NPP	NPP Solid
26	Okaikwei North	NDC	Toss Up
27	Okaikwei South	NPP	NPP Solid
28	Sege	NDC	Toss Up
29	Shai Osudoku	NDC	NDC Solid
30	Tema Central	NPP	NPP Solid
31	Tema East	NDC	Toss Up(+NDC)
32	Tema West	NPP	Toss Up
33	Trobu	NPP	NPP Solid
34	Weija	NPP	NPP Solid

North East Region

#	Constituency	Incumbent Party	Projection
1	Bunkpurugu	NDC	Toss Up
2	Chereponi	NPP	Toss Up(+NPP)
3	Nalerigu/Gambaga	NDC	Toss Up
4	Walewale	NPP	Toss Up
5	Yagaba/Kubori	NPP	Likely NPP
6	Yunyoo	NPP	Likely NPP

Northern Region

#	Constituency	Incumbent Party	Projection
1	Bimbilla	NPP	NPP Solid
2	Gusheigu	NPP	Toss Up
3	Karaga	NPP	Toss Up(+NPP)
4	Kpandai	NDC	Toss Up
5	Kumbungu	NDC	Toss Up
6	Mion	NPP	Toss Up(+NPP)
7	Nanton	NPP	Toss Up(+NPP)
8	Saboba	NDC	Toss Up
9	Sagnarigu	NDC	Toss Up
10	Savelugu	NDC	Toss Up
11	Tamale Central	NDC	Toss Up
12	Tamale North	NDC	Toss Up
13	Tamale South	NDC	NDC Solid
14	Tatale Sanguli	NPP	Toss Up
15	Tolon	NPP	Likely NPP
16	Wulensi	NDC	Toss Up
17	Yendi	NPP	Likely NPP
18	Zabzugu	NPP	Toss Up

Oti Region

#	Constituency	Incumbent Party	Projection
1	Akan	NDC	NDC Solid
2	Biakoye	NDC	NDC Solid
3	Buem	NDC	NDC Solid

4	Krachi East	NDC	Toss Up
5	Krachi Nchumuru	NDC	Toss Up
6	Krachi West	NDC	Toss Up
7	Nkwanta North	NDC	Toss Up
8	Nkwanta South	NDC	Toss Up(+NDC)

Savannah Region

#	Constituency	Incumbent Party	Projection
1	Bole Bamboi	NDC	NDC Solid
2	Daboya Mankarigu	NPP	Toss Up(+NPP)
3	Damongo	NPP	Toss Up
4	Salaga North	NPP	Toss Up
5	Salaga South	NDC	Toss Up
6	Sawla/Kalba	NDC	NDC Solid
7	Yapei/Kusawgu	NDC	Likely NDC

Upper East Region

#	Constituency	Incumbent Party	Projection
1	Bawku Central	NDC	Toss Up
2	Binduri	NPP	Toss Up
3	Bolgatanga Central	NDC	NDC Solid
4	Bolgatanga East	NDC	NDC Solid
5	Bongo	NDC	NDC Solid
6	Builsa North	NDC	NDC Solid
7	Builsa South	NDC	Toss Up
8	Chiana/Paga	NDC	Likely NDC
9	Garu	NDC	Likely NDC
10	Nabdam	NDC	Likely NDC
11	Navrongo Central	NDC	Likely NDC
12	Pusiga	NDC	Toss Up
13	Talensi	NDC	Toss Up
14	Tempene	NDC	Toss Up(+NDC)
15	Zebilla (Bawku West)	NDC	Likely NDC

Upper West Region

#	Constituency	Incumbent Party	Projection
1	Daffiama / Bussie / Issa	NDC	Toss Up
2	Jirapa	NDC	NDC Solid
3	Lambussie-Karni	NPP	Toss Up
4	Lawra	NDC	Toss Up(+NDC)
5	Nadowli Kaleo	NDC	NDC Solid
6	Nandom	NPP	Likely NPP
7	Sissala East	NPP	Toss Up
8	Sissala West	NDC	Toss Up(+NDC)
9	Wa Central	NDC	Likely NDC
10	Wa East	NDC	Likely NDC
11	Wa West	NDC	NDC Solid

Volta Region

#	Constituency	Incumbent Party	Projection
1	Adaklu	NDC	NDC Solid
2	Afadjato South	NDC	NDC Solid
3	Agotime Ziope	NDC	NDC Solid
4	Akatsi North	NDC	Likely NDC
5	Akatsi South	NDC	NDC Solid
6	Anlo	NDC	NDC Solid
7	Central Tongu	NDC	NDC Solid
8	Ho Central	NDC	NDC Solid
9	Ho West	NDC	NDC Solid
10	Hohoe	NPP	Toss Up
11	Keta	NDC	NDC Solid
12	Ketu North	NDC	Toss Up
13	Ketu South	NDC	NDC Solid
14	Kpando	NDC	NDC Solid
15	North Dayi	NDC	NDC Solid
16	North Tongu	NDC	NDC Solid
17	South Dayi	NDC	NDC Solid
18	South Tongu	NDC	NDC Solid

Western Region

#	Constituency	Incumbent Party	Projection
1	Ahanta West	NPP	Toss Up
2	Amenfi Central	NDC	Likely NDC
3	Amenfi East	NDC	Likely NDC
4	Amenfi West	NDC	Toss Up
5	Effia	NPP	NPP Solid
6	Ellembelle	NDC	Likely NDC
7	Essikado-Ketan	NPP	Toss Up
8	Evalue Ajomoro Gwira	NDC	Toss Up
9	Jomoro	NDC	Toss Up(+NDC)
10	Kwesimintsim	NPP	NPP Solid
11	Mpohor	NPP	Likely NPP
12	Prestea Huni Valley	NDC	Likely NDC
13	Sekondi	NPP	NPP Solid
14	Shama	NPP	Toss Up
15	Takoradi	NPP	NPP Solid
16	Tarkwa Nsuaem	NPP	Likely NPP
17	Wassa East	NDC	Toss UP

Western North Region

#	Constituency	Incumbent Party	Projection
1	Aowin	NDC	Likely NDC
2	Bia East	NDC	Toss Up
3	Bia West	NDC	Toss Up
4	Bibiani-Anhwiaso Bekwai	NPP	Likely NPP
5	Bodi	NDC	Toss Up(+NDC)
6	Juaboso	NDC	Likely NDC
7	Sefwi Akontombra	NPP	Likely NPP
8	Sefwi Wiawso	NPP	Toss Up
9	Suaman	NDC	Toss Up

Methodology

Our forecast model is based on two category of data set. The first data set is the historical election results from 2000 to 2020. The second is a rating factor, called the Economic Wellbeing Index (EWI). The EWI allows us to build into the model the performance of the incumbent government over the last four years (in this case from 2021 to 2024 inclusive). The model uses five key parameters:

- The magnitude of swing in the constituency parliamentary results.
- The direction of swing in the constituency parliamentary results
- Election cycles
- Volatility in the election data for that constituency
- Economic Wellbeing Index (EWI): This rating is from 1 to 10, with 10 being the best performance for the incumbent government and 1 being the worst performance for the incumbent government. The EWI is derived from 5 key sources: the average annual inflation in the last four years, the average real GDP growth rate, the performance of the local currency over the last four years, the corruption perception index published by Transparency International and the latest Afrobarometer report. The Afrobarometer report helps us to capture the overall sentiment and mood of the country on several key governance, economic and social issues.

These parameters are then used to generate an *estimate* for each constituency. It is this estimate that we use in predicting the likely outcome of the parliamentary elections in each constituency. The following are the prediction/decision criteria based on the estimate:

DECISION	ESTIMATE	INTERPRETATION
Solid	Estimate is greater than 15	Party has at least a 95% chance of winning
Likely	Estimate is greater than 10 but less than or equal to 15	Party has at least a 60% chance of winning
Toss Up(+NPP)	Estimate is greater than 5 but less than or equal to 10	A very close contest. NPP to win narrowly
Toss Up(+NDC)	Estimate is greater than 5 but less than or equal to 10	A very close contest. NDC to win narrowly
Toss Up	Estimate is less than or equal to 5	Race is dead heat and too close call

EFFECT OF INDEPENDENT CANDIDATES: One of the key assumptions underlying our model is that the effect of independent candidates is negligible. In constituencies where independent candidates enjoy strong support and are able to get at least 10% of the valid votes, this assumption may not hold and this could adversely impact the accuracy of our projection for that particular constituency.

ABOUT THE AURTHOR

The author and the brain behind this forecast model is Ebenezer Nimako Nyarko, the founder and CEO of EN Analytics and Consulting Limited. He is an actuarial analyst, a data scientist and a quant professional and a consultant. He holds an MSc in actuarial science from the University of Leicester, UK, and an MSc in statistics from the University of Cape Coast. He is currently a PHD candidate in Finance at the University of Ghana Business School, Legon. He obtained his bachelor's degree in Mathematics from the Kwame Nkrumah University of Science and Technology (KNUST), Kumasi.

At the professional level, he holds the Diploma in Actuarial Techniques (DAT) qualification from the Institute and Faculty of Actuaries (IFoA), UK. His main areas of interest are predictive statistics, model development, data science, simulations, and pensions.

Prior to starting EN Analytics, he worked in the public sector where he performed quantitative analysis for the organisation and developed models for addressing national issues. He also served as an adjunct lecturer in actuarial science at the University of Cape Coast from 2016 to 2022.

CONTACTS

Tel : 0558630338

Email; info@enanalytics.com

2024 PRESIDENTIAL FORECAST

Our forecast and projection of the winner of the 2024 presidential elections will be on election night. The forecast model we have developed for the presidential elections uses the actual results of the first 50 constituencies to project the winner and the final outcome of the presidential elections. Follow EN Analytics or my pages on linkedIn and facebook on election night to know who has won the elections as soon as the results of the first 50 constituencies come in. We accurately projected the winner in both 2016 and 2020 and we will do same in 2024 with a 95% degree of confidence.

DATE OF REPORT: 8TH OCTOBER 2024